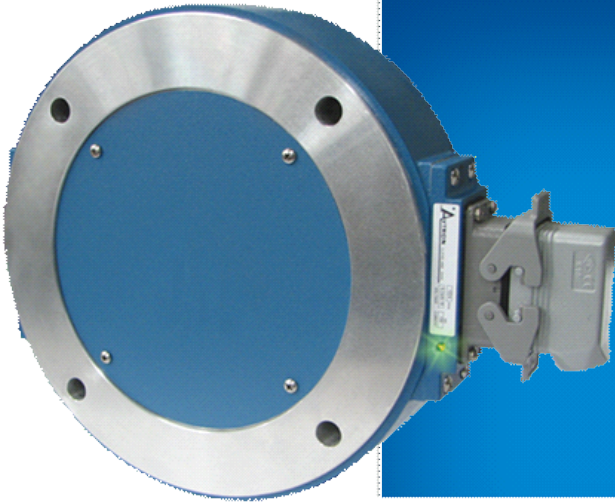


Avtron XR125 SMARTSafe™ Encoders



Hazardous Duty Magnetic Encoder, Heavy Duty 12.5" Modular

Our Largest Hazardous Duty Encoder

- Fits NEMA 12.5" Flanges
- Fits Shafts up to 7 7/8" [200mm]
- ATEX/IECEX Rated for Zone 1, 2, 21 & 22 Applications
 - Ideal for Oil and Gas Drilling
 - No Bearings to Wear Out
 - Fully Potted Electronics
 - Up to 8192 PPR
- Self-Diagnostic LED and Alarm Output
 - 3 Year No-Hassle Warranty
- cULus Class I Division 1 Groups A, B, C, D, Listed
 - cULus Class I Zone 0 Group IIC
- cULus Class I Division 2 Groups A, B, C, D, Listed

XR125

XR125 SMARTSafe 12.5" modular incremental quadrature rotary encoders are a breakthrough in hazardous duty encoders to fit large shaft applications. They are ATEX/IECEX and cULus approved and offer incredibly reliable no-bearing construction! SMARTSafe encoders can be used in ATEX/IECEX gas and dust and UL gas environments. Also available: hollow shaft models (XR45, XR47, XR685), shafted models (XR4F, XR485), no-bearing modular encoders to fit other flange sizes (XR56, XR67, XR85, XR115, XR850), and modular sensors (XR5, XR12).

For Level 2 applications requiring ATEX/IECEX Zone 2 or 22 or UL Class I, Division 2, Groups A,B,C,D use the XR125 directly in your application, with no barrier, isolator or cable gland required.

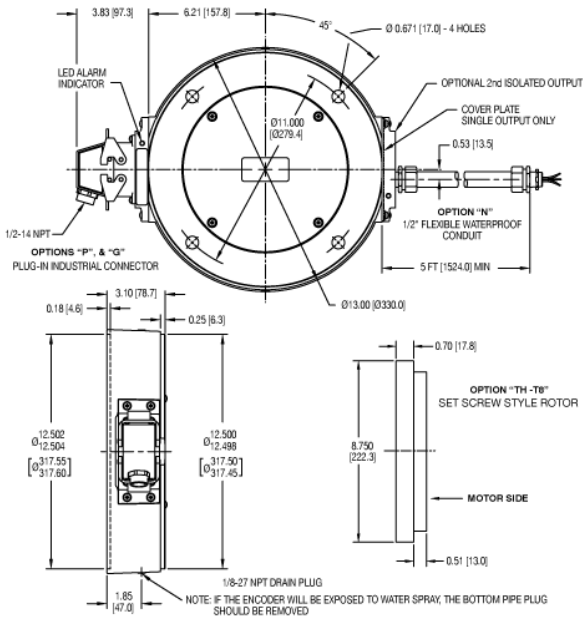
For Level 1 applications requiring ATEX/IECEX Zone 1 or 21 use the XRB1 or XRB2 isolator in your control cabinet which permits the use of intrinsically safe wiring instead of explosion proof conduit or glands. The XR125 can also be used in UL Class I Division 1 and Zone 0 applications using the XRB2 Isolator.

Unlike the competition, Avtron SMARTSafe encoder systems are protected against short circuits, power-to-output wiring, and output-to-ground faults.

Instead of mounting a tiny optical encoder with weak bearings on a wobbling stub shaft, mount XR125 directly on your main application shaft. Vibration, shock, liquids, dust and dirt won't harm SMARTSafe XR125 encoders! Paint booths, draw works, coil tubing rigs...XR125 can keep them all working 24-7-365.

Eliminate the biggest cause of industrial encoder failure--eliminate the bearings with XR125 hazardous duty encoders.

OUTLINE DRAWING



Check out our website for more detailed specifications, drawings, and installation instructions. www.avtronencoders.com

MORE XR125 ADVANTAGES

- Easy-swap electronic modules
- Sensors can be directly machine-mounted for OEM flexibility
- No air gap adjustment required
- Shrugs off dirt, oil, and water contamination
- No glass disks to break or optics to fail
- 4,500,000+ hour MTBF design
- Wide Sensor-Rotor Gap: No Shimming or Scraping

XR125 SPECIFICATIONS

Operating Power: (add cable drive current as req'd)
 Level 1 Protection: 12-24VDC In, 10.6V Out, 150mA
 Level 2 Protection: 5-24VDC In/Out, 100mA
Output Format: A Quad B with marker (A,A-, B,B-, Z,Z-)
Frequency Range: 0 to 165 KHz
PPR: 8-8192
Speed: 5000 RPM Max. (contact factory for higher speeds)
Maximum Cable Length:
 Level 1 (Local/Remote): 1000' [300m] / 400' [120m]
 Level 2: 500' [150m] @ 5-12V; 200' [60m] @ 24V
Rotor Positioning: Up to +/- 0.100" [+/- 2.54mm] movement/misalignment
Sensor-Rotor Gap: 0.045", +0.015/-0.040" [1.14mm+0.38/-1.0]
Temperature: -40°C to 80°C (Storage -40°C to 100°C)
Environmental: IP67 (see manual for details)
Vibration: 5-2000Hz, 20G; 100G Shock
Weight: 15-18 lbs. [7-8kg]
Certifications:
 Level 1: ATEX/IECEx Zone 1 & Zone 21 Group IIC
 Level 1: cULus Class I, Division 1 and Zone 0 Group A,B,C,D*
 Level 2: ATEX/IECEx Zone 2 & 22 Group IIC
 Level 2: cULus Class I, Division 2 Group A,B,C,D
 *See installation drawings for Warnings and Limitations

SELECTION GUIDE

XR125 PART NUMBERS AND AVAILABLE OPTIONS									
Model	Thru Shaft Rotor Bore, US Sizes Metric		Inboard & Outboard Cover Plates	Left Module		Right Module		Connector Options	Modifications
				Line Driver	PPR	Line Driver	PPR		
XR125	XX- no rotor TH- 1.375" TJ- 1.625" TL- 1.875" TM- 2.000" TN- 2.125" TQ- 2.250" TP- 2.375" TR- 2.500" TT- 2.625" T2- 2.875" TV- 3.125" TW- 3.250" TY- 3.375" T4- 3.875" TB- 4.125" T5- 4.250"	TC- 4.375" T6- 4.500" TD- 4.625" TE- 4.690" TA- 4.875" TG- 5.000" T7- 5.375" T8- 6.750" T9- 7.875" MG- 25mm MC- 110mm ME- 120mm MK- 120mm (m6 tol shaft) MF- 160mm M8- 170mm	X- none F- no inboard, flat outboard T- no inboard, thru outboard	X- none F- none G- 60 H- 120 A- 128 L- 240 N- 256 P- 300 E- 360 B- 480 Q- 500 R- 512 S- 600 V- 900 J- 960 Y- 1024 Z- 1200 3- 2000 4- 2048 5- 2500 D- 4096 8- 4800 9- 5000 0- special	X- none F- none G- 100 H- 120 A- 128 L- 240 N- 256 P- 300 E- 360 B- 480 Q- 500 R- 512 S- 600 V- 900 J- 960 Y- 1024 Z- 1200 3- 2000 4- 2048 5- 2500 D- 4096 8- 4800 9- 5000 0- special	X- none F- none G- 100 H- 120 A- 128 L- 240 N- 256 P- 300 E- 360 B- 480 Q- 500 R- 512 S- 600 V- 900 J- 960 Y- 1024 Z- 1200 3- 2000 4- 2048 5- 2500 D- 4096 8- 4800 9- 5000 0- special	See chart at right	000- none 004- Super magnetic shielding 005- Expand top speed to 6000 RPM 006- Super magnetic shielding & sealed housing for marine 018- w/ isolator XR1 or XR2 for cabinet mount 4xx- Special PPR Code, consult factory 9xx- Special Cable Length, xxx=length (ft/0.3m)	

Line Driver Code				Connector Options
Level 1		Level 2		
Class Div 1	Zone 1 & 21 (a)	Class Div 2	Zone 2 & 22	
	F	H	n/a	
F	H	n/a	7	*- 7 Pin MS
F	H	n/a	7	R- 10 Pin mini twist lock
F	H	n/a	7	W- Flexible cable with Gland
F	H	n/a	7	G- 10 Pin Industrial with Plug
F		G		4- Conduit Box, Terminal Block 1/2" NPT
F		G		5- Conduit Box, Terminal Block 3/4" NPT
F		G		6- Conduit Box, Terminal Block 1" NPT
F		G		7- Conduit Box, Terminal Block 25mm PT
XR2	XR2	None	None	Required Isolator: order separately or with option code 018

*= E, F, J, K, S, T, U, V.
 Units with connector options 4, 5, 6, or 7 are dual labeled for both cULus Class / Div and ATEX / IECEx Zones



Nidec-Avtron Makes the Most Reliable Encoders in the World

8901 E. PLEASANT VALLEY ROAD • INDEPENDENCE, OHIO 44131-5508
 TELEPHONE: (1) 216-642-1230 • FAX: (1) 216-642-6037
 E-MAIL: tachs@nidec-avtron.com • WEB: www.avtronencoders.com



All dimensions are in inches [millimeters].
 Specifications and features are subject to change without notice.
 EU-SMART™, SMARTSafe™, SMARTach II™, THIN-LINE™, THIN-LINE II™, WIDE-GAP™, and BULLSEYE32™ are trademarks of Nidec Avtron Automation. All other trademarks and registered trademarks are the property of their respective owners.