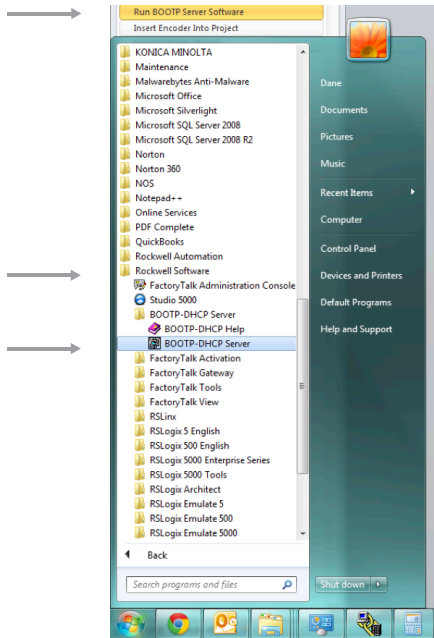


# AV6A EtherNet/IP using ControlLogix Address Setup

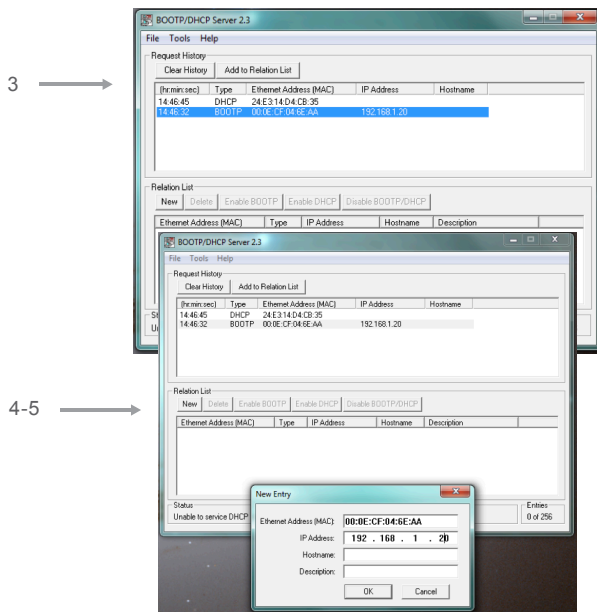


## Run BOOTP Server Software

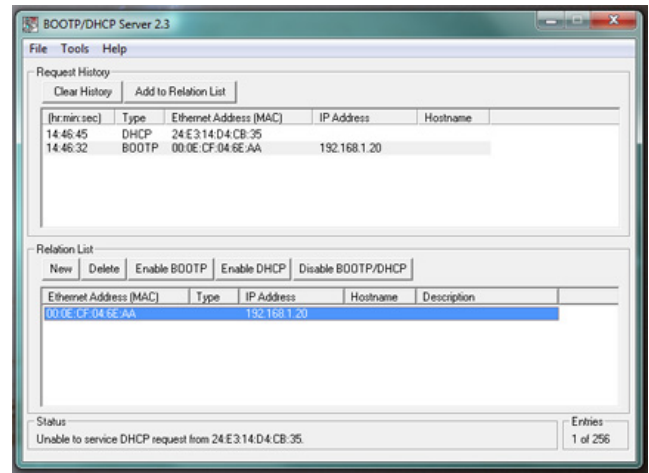
1. Make sure you are running Logix version 20 or later.
2. Run Rockwell's BOOTP Server - Go to Windows Start → All Programs → Rockwell Software → BOOTP DHCP Server



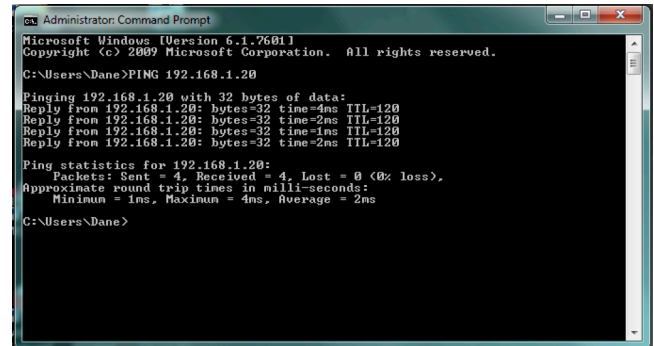
3. After 10 Seconds the MAC address found on the encoder nameplate should be in the "Request History"
4. Double click on the MAC address for the encoder. The following window will open:
5. Program the IP address for the encoder and press "OK".



6. You should now see the IP address in the "Relation List".



7. In the "Request History" and the "Relation List", verify the MAC and the IP address coincide.
8. In the "Relation List", click on the MAC address with the new IP.
9. Click on the "Disable BOOTP/DHCP" button.
10. Go to windows "Command Prompt" and ping the encoder IP address.



11. If the ping worked like the picture above, the encoder is now ready for configuration in Logix or Studio.
12. Follow the instructions for inserting an AV6A into your PLC program.