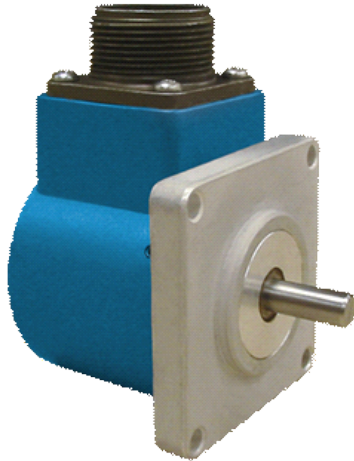


AVTRON™ ENCODERS

Avtron AV20 Encoders



Optical Light Mill Duty Solid Shaft Encoder, 2" Flange Mount

Setting a New Standard AV20

- | Shaft Sizes include 1/4", 3/8", and 10mm
 - | Simple Installation
 - | Unbreakable Optical Disk
 - | Up to 3600 PPR
- | Wide-Gap Technology: Up to 8X larger gap between sensor and rotor
- | Direct Replacement for Model H20 and Others without Rewiring
 - | Industry Standard Face or Flange Mounting
- | IP65/Nema 4 Rating: Dust and Liquid Tight
 - | Superior Bearings and Seals
 - | -40°C to +100°C Operation
 - | 2 Year No-Hassle Warranty

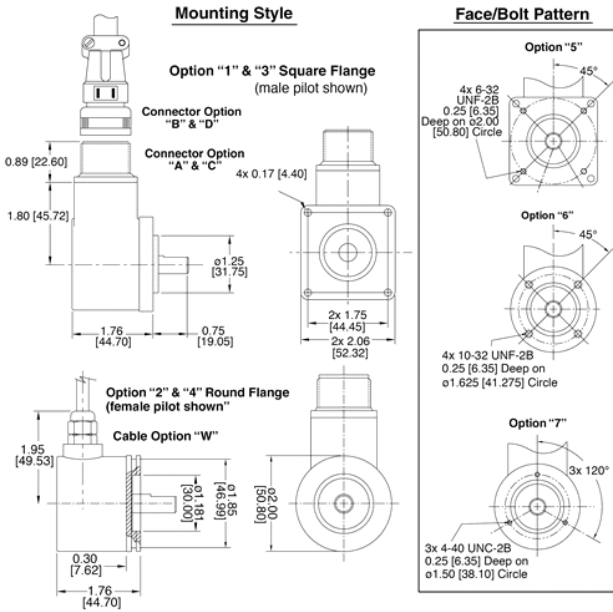
AV20 encoders look like industry standard incremental quadrature rotary encoder units, and fit the same mounting patterns on all machines. That's where the similarity ends. Our AV20 encoders can withstand conditions that make other encoders fail. The solid aluminum housing and stainless steel shaft offer increased durability in tough environments.

Avtron AV20 encoders have superior shaft seals and bearings that stay sealed to keep contaminants out, through temperature cycling and liquid sprays. Our encoder seals are protected by mechanical barriers to prevent flexing or failure. Avtron's superior bearings permit much larger side and axial loads for pulley and belt applications, and feature synthetic lubricants for even longer life in all applications.

Many competitive optical encoder designs risk sensor damage from any vibration or shock: sensors ride less than four thousandths of an inch from the thin, often flexible, optical disk spinning at full motor speeds. Some designs even use thin glass disks in "industrial" products! Avtron uses only unbreakable disks and a sensor to disk gap over 8X larger than the competition.

Our optical AV20 encoders are setting a new standard for quality, durability, and performance. Select an Avtron AV20 today!

OUTLINE DRAWING



MORE AV20 ADVANTAGES

- ▮ All-digital design, no trim pots or adjustments for longer life
- ▮ Advanced sensor technology
- ▮ Superior bearings with synthetic lubricant for longer life
- ▮ No extra charge for signal complements and marker pulse
- ▮ More than 2X the axial and side load capability of the competition
- ▮ Superior line drivers withstand short circuits and reverse voltage wiring errors

AV20 SPECIFICATIONS

Operating Power: Volts: 5 - 28 VDC; Current: 50mA, no load
Output Format: A Quad B with marker (A,/A, B,/B, Z,/Z) available
Frequency Range: 0 to 125 KHz
PPR: 1 - 3600 Standard (for other PPR needs consult factory)
Speed: 6000 RPM Max., (for higher speeds, consult factory)
Axial Load: 100 lbs [45 kg] max.
Radial Load: 100 lbs [45 kg] max.
Temperature: -40° to 100°C
Environment: Nema 4/IP65 (when provided with shaft seals)
Vibration: 5-2000 Hz
Shock: 50G, 11mS duration
Weight: 0.575 lbs [260 g]

Check out our website for more detailed specifications, drawings, and installation instructions. www.avtronencoders.com

SELECTION GUIDE

AV20 PART NUMBERS AND AVAILABLE OPTIONS											
Mount	PPR*		Line Driver	Shaft Size	Connector Options	Wiring	Mounting Style	Face/Bolt Pattern	Seals	Channels	Special Features
AV20	A- 1 C- 25 F- 60 G- 100 H- 120 K- 200 L- 240 M- 250 N- 256 P- 300 E- 360 Q- 500 R- 512 S- 600	T- 625 U- 720 W- 1000 Y- 1024 Z- 1200 1- 1250 2- 1440 3- 2000 4- 2048 5- 2500 6- 2540 7- 3600 0- Special	1- 5-28V (7272) 2- 5-28V, open collector (7273) 4- 5-28V in, 5V out (7272)	0- Non-std. With Flat A- 0.25" B- 0.375" C- 10mm Without Flat N- 0.25" P- 0.375" R- 10mm	W- 18" cable (pigtail)	A- Side	1- Sq. Flange 2.06" w/ 1.25" male pilot 2- Rnd. Flange 2.0" w/ 1.25" male pilot 3- Sq. Flange 2.06" w/ 1.181" female pilot 4- Rnd. Flange 2.0" w/ 1.181" female pilot	X- None 5- 4x 6-32 @ 2" 6- 4x 10-32 @ 1.625" 7- 3x 4-40 @ 1.5"	A- Shaft Sealed** B- Bearing Sealed X- None**	With Comp. A- A, Ā, B, B̄ Z, Z̄*** B- A, Ā, B, B̄ D- A, Ā Without Comp. E- A, B, Z F- A, B	000- None 00W- Connector on 18" cable: Use w/ Option "T". "U" 9xx- Specify cable length xx=feet (use w/ Option "W")
Connector Options											
				Mounted on Encoder				Mounted on 18" cable (00W)			
				10 Pin MS		6 Pin MS		7 Pin MS		8 Pin M12	
				A- w/o plug (std. phasing) B- w/o plug (reverse phasing) C- w/ plug (std. phasing) D- w/ plug (reverse phasing)	E- w/o plug (std. phasing) F- w/o plug (reverse phasing) G- w/ plug (std. phasing) H- w/ plug (reverse phasing)		J- w/o plug (std. phasing) K- w/o plug (reverse phasing) M- w/ plug (std. phasing) N- w/ plug (reverse phasing)		T- w/o plug (Turck Pinout) U- w/o plug (US Pinout)		

* up to 16,384 PPR available
 ** recommended, N/A with Mounting Styles "3" & "4".
 *** N/A with MS 6 or 7 Pin Connector.
 ^^ not recommended for industrial applications

All dimensions are in inches [millimeters].
 Specifications and features are subject to change without notice.



Nidec Industrial Solutions
 243 Tuxedo Avenue - Cleveland, Ohio 44131
 encoderhelpdesk@nidec-industrial.com
 +1 216-642-1230 - www.avtronencoders.com



Features and specifications are subject to change without notice.
 EU-SMART™, SMARTSafe™, SMARTach™, THIN-LINE™, WIDE-GAP™, SAFETach™ and BULLSEYE32™ are trademarks of Nidec Industrial Solution.
 All other trademarks and registered trademarks are the property of their respective owners. Nidec Industrial Solutions' standard warranty applies.
 All dimensions approximate.