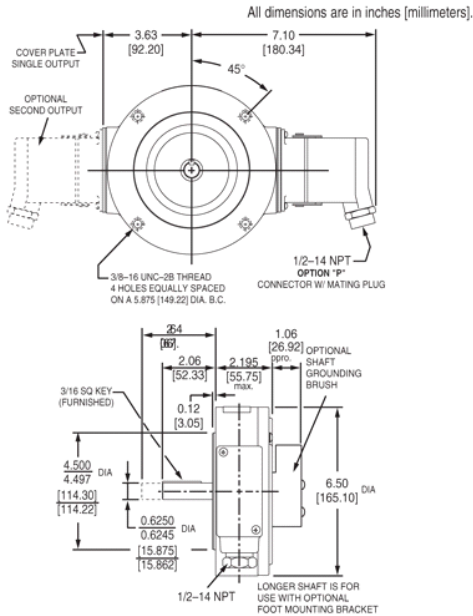


OUTLINE DRAWING



MORE M3 ADVANTAGES

- Highly resistant to electrical and magnetic motor and brake noise
- Auxiliary channel offers separate low frequency outputs (1/4) at no extra charge on each output
- Marker Pulse Standard
- Available C-Face tether kits (4.5" to 16")
- Available threaded rod torque arm
- Optional OSHA finger guard
- Optional shaft grounding brush
- Optional dual output for backup, complete isolation between outputs
- 1 Year No-Hassle Warranty

M3 SPECIFICATIONS

Operating Power: 5-24 VDC, 5-18V, 12-24V; Current 120mA, no load

Output Format: A,/A, B,/B, C,/C ; Marker Z,/Z

Frequency Range: 0 to 150 KHz

PPR: 240-2500

Speed:

5000 RPM Max. Std., shafts 1 1/2" to 1 5/8"

3600 RPM Max. Std., shafts 2" to 2 3/8"

(for higher speeds, consult factory)

Temperature: -40°* to 85°C (*-20° standard)

Chemical: Polyurethane enamel paint protects against salt spray, mild acids, and bases

Weight: 7 lbs.

All dimensions are in inches [millimeters].

Check out our website for more detailed specifications, drawings, and Specifications and features are subject to change without notice. installation instructions. www.avtronencoders.com

* See instruction sheet for full list.

SELECTION GUIDE

M3 PART NUMBERS AND AVAILABLE OPTIONS									
Model	Bore Size	Mounting Style	Line Driver	Output Location	PPR	Connector	Modifications		
M3-	7-2 3/8"	G-48mm	S- End of Shaft	1- 5 to 24 VDC	L- Single output	240 600	000- None 003- Torque Arm Mount 005- -40° C Rating 008- 4.5" C-Face Mount 009- Northstar Pinout 015- Stainless Steel Shaft 016- 8.5" C-Face Mount		
	8-1 1/2"	D-52mm	T- Thru Shaft	2- 5 to 18 VDC	left side	256 1024			
	9-1 5/8"	E-58mm	G- End of Shaft	3- 18 to 24 VDC	R- Single output	360 1200			
	6-2"	H-60mm	with Grounding	4- 5 to 24 V in, 5 V out	right side	480 2048			
				D- Dual output	500 2500				
					512				
Connector									
10 Pin Connector				6 Pin MS		5 Pin MS	Conduit Box	3 ft. Flex. Cable	
MS		MS mini		EPIC		M940 replacement	M737A replacement	N- with color coded leads	W- Sealed, Pigtail
A- without Plug ^a		K- with Flex. Conduit Adapter ^b		P- with Plug		D- with Plug ^b	E- without Plug ^a	T- with Terminal Block	X- Sealed, Industrial Connector without Plug
B- with Flex. Conduit Adapter ^a		L- with Plug ^b		V- without Plug			F- with Plug ^a		Z- Sealed, Industrial Connector with Plug
C- with Plug ^a		M- without Plug ^b					M727A replacement		
							H- without Plug ^a		
							J- with Plug ^a		

^a side exit ^b bottom exit



Nidec Industrial Solutions
243 Tuxedo Avenue - Cleveland, Ohio 44131

encoderhelpdesk@nidec-industrial.com
+1 216-642-1230 - www.avtronencoders.com



Features and specifications are subject to change without notice. EU-SMART™, SMARTSafe™, SMARTach™, THIN-LINE™, WIDE-GAP™, SAFETach™ and BULLSEYE32™ are trademarks of Nidec Industrial Solution. All other trademarks and registered trademarks are the property of their respective owners. Nidec Industrial Solutions' standard warranty applies. All dimensions approximate.